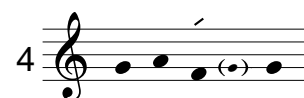
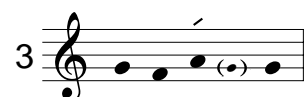


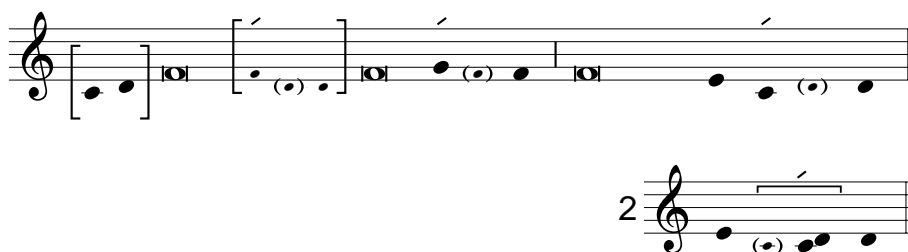
Gregorianska psalmtoner

Många psalmtoner har olika alternativ i slutkadensen. Valet av kadens är i första hand beroende av det omkväde eller den antifon till vilken psalmtönen ansluter sig.

Idorisk



II hypodorisk



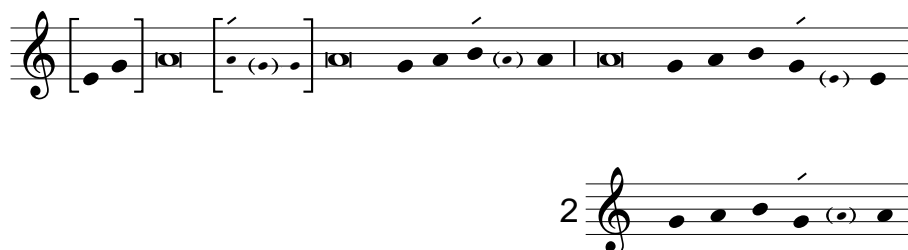
eller

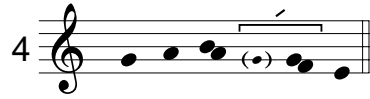


III frygisk

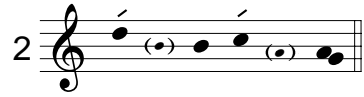


IV hypofrygisk





V lydisk



VI hypolydisk

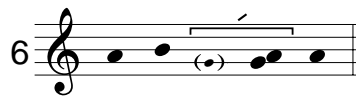
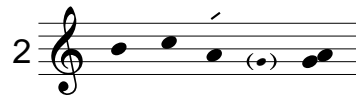


VII mixolydisk

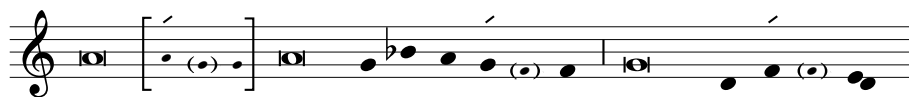




VIII hypomixolydisk



Tonus peregrinus



Tonus irregularis

